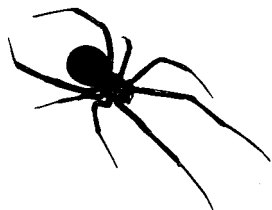


MODEL NUMBER: BW-1400

CHALLENGER



CONGRATULATIONS on your purchase of the *CHALLENGER* remote vehicle alarm. You now own the most reliable security system available today. It is made in the U.S.A., designed by leading experts in the security industry, and utilizes the latest state of the art technology.

The *CHALLENGER* comes with two 2-button remotes, flashing L.E.D., a choice of manual or passive arming, and many convenience features. With minimum care and upkeep, this alarm will give you many years of service and protection. Read the following information carefully. It will help you to get the best from your system.

A) MANUAL OPERATION

- 1) TO ARM** – Press the left button. You will hear 1 chirp and the L.E.D. will flash slowly indicating your system is armed.
- 2) TO DISARM** – Press the left button. You will hear 2 chirps and the L.E.D. will no longer flash indicating the system is disarmed.

B) PASSIVE OPERATION

- 1) TO ARM** – If your dealer has installed the *CHALLENGER* as a passive system, the alarm will arm automatically approximately 30 seconds after the last door is closed. (Note: you can also arm immediately by pressing the left button as in #1 above).
- 2) TO DISARM** – Disarm system same as in #2 above.
- 3) VALET** – Your dealer installed a valet (toggle) switch located conveniently in the dashboard area. To activate the switch, flip it to the on position prior to turning off the engine. You can now leave the vehicle without the system arming. To deactivate from the valet mode, turn on the ignition and flip the toggle to the off position.

- C) DOOR LOCK AND UNLOCK** – If your vehicle has electronic door locks, and your dealer connected them to the alarm, the *CHALLENGER* will also lock when arming, and unlock when system is disarmed in either manual or passive operation.

- D) AUDIO WARNING INDICATOR** – If you hear 3 chirps (instead of the normal 2 chirps) when disarming, it means either an entry attempt was made, or your vehicle was "bumped" hard enough to cause the alarm to trigger. Check your vehicle to make sure everything is working and there is no damage.
- E) REMOTE PANIC** – An important safety feature on your *CHALLENGER* system is a remote panic which will trigger your alarm from a substantial distance away. Press the left button (approximately 3 seconds) until siren sounds. To stop the siren, press the left button again.
- F) STARTER INTERRUPT** – As added protection, the *CHALLENGER* has a built-in starter interrupt. When system is armed, the vehicle cannot be jump started, hot wired, or started with a key. This makes it extremely tough on any theft attempt. When you use your transmitter to disarm the system, the vehicle can be started normally.
- G) MANUAL OVERRIDE SWITCH** – If you lose or damage your remote transmitter, or if there is a malfunction, you can still enter your vehicle even when armed, utilizing the following procedure. Open your door (the siren will sound and the "starter interrupt" will be in effect), turn ignition switch to the on position, and press the "hidden" override switch. Your dealer will show you where the switch is installed. The siren sound will stop and the "starter interrupt" mode overridden, allowing you to start the vehicle. See your dealer as soon as possible to replace transmitter or correct any malfunction.
- H) AUXILIARY FEATURES** – The **BW-1400** *CHALLENGER* transmitter has a second button which can be used for accessories or options to your system. For example, if your vehicle has an electronic trunk release, with the proper module, the 2nd button can be programmed to open it automatically. Using additional modules, the 2nd button can roll-up windows, open your garage door, or remotely start your car. **Ask your dealer to explain these and other options or accessories available to you.**

(SEE AVAILABLE ACCESSORIES ON REVERSE SIDE)

The following information is found on the label affixed to the control module. If the information is not on this card, see your dealer.

SERIAL NUMBER: BW-1400

TRANSMITTER CODE: _____

ACCESSORIES AVAILABLE FOR YOUR BLACK WIDOW BW-1400 CHALLENGER:

MAS-2 Radar Field Disturbance Sensor

MTS-20W Programmable Multi-Tone Siren

BWS-290 Electronic Shock Sensor

BW-651 Multiuse Receiver Module

BWS-500 Battery Back-Up

RAS-101 Remote Auto Start

WRM-2 Window Roll-Up Module

BWS-390 Leather Transmitter Case

LIFETIME LIMITED WARRANTY

The Black Widow Division of DLC, Inc. warrants to the original purchaser that the vehicle alarm system purchased will be free from defects in workmanship.

If it is determined that a defect exists, at our option, we will repair defective parts or replace the system. If product is defective within one (1) year from date of purchase, item will be repaired or replaced at no cost to original purchaser. If product is defective after one (1) year from date of purchase, ship defective unit prepaid to Black Widow Division, DLC, Inc. along with a \$20.00 cashier's check or money order to cover cost of handling.

Proof of purchase by the original owner must accompany warranty request before service is rendered.

This warranty covers normal use. It does not cover damage from alteration, misuse, abuse, accident, improper installation or maintenance. Warranty does not cover transmitter batteries or cases. This warranty gives you specific legal rights and you may have rights which vary from state to state. If you have any questions, contact your authorized Black Widow dealer.



DLC/U.S.A.

12753 Moore Street
Cerritos, California 90701

DLC/CANADA

Suite 201B, 20771 Langley Bypass
Langley, British Columbia
V3A 5E8, Canada